

COLORWAY SUGGESTION: "MAXIMILIAN'S FOLLY"

EMERALD



KEY:

K = Kona Cotton Solids

MB = Moda Bella Solids

PP = Painter's Palette by
Paintbrush Studio Fabrics

A



K – 1004 Aqua

MB – 34 Aqua

PP – 095 Beryl

B



K – 144 Sour Apple

MB – 415 Parakeet

PP – 076 Apple Green

C



K – 45 Pool

MB – 326 Poolside

PP – 039 Jade

D



K – 1141 Fern

MB -76 Kelly

PP – 165 Paradise

E



K – 1161 Holly

MB – 371 Leprechaun

PP – 093 Android

F



K – 1185 Kelly

MB – 14 Christmas Green

PP – 074 Forest

G



K – 1019 Black

MB – 96 Super Black

PP – 004 Ebony



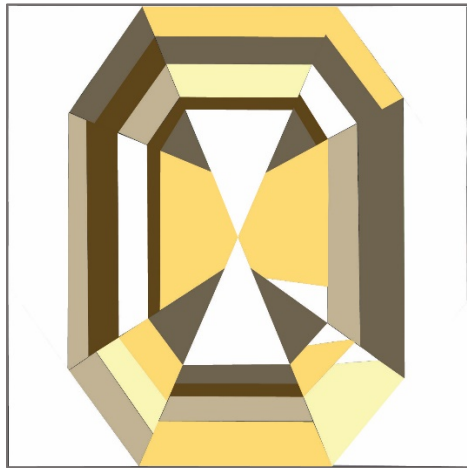
K – 1387 White

MB – 200S Off White

PP – 000 White

COLORWAY SUGGESTION: "MAXIMILIAN'S FOLLY"

YELLOW



KEY:

K = Kona Cotton Solids

MB = Moda Bella Solids

PP = Painter's Palette by
Paintbrush Studio Fabrics

A



K – 1229 Meringue
MB – 31 Baby Yellow
PP – 017 Honeycomb

B



K – 1387 White
MB – 200S Off White
PP – 000 White

C



K – 413 Parchment
MB – 201 Sand
PP – 144 Sand Dollar

D



K – 148 Daffodil
MB – 24 Yellow
PP – 139 Daisy

E



K – 340 Herb
MB – 129 Weathered Teak
PP – 041 Taupe

F



K – 406 Cappuccino
MB – 71 Moda U Brown
PP – 170 Java

G



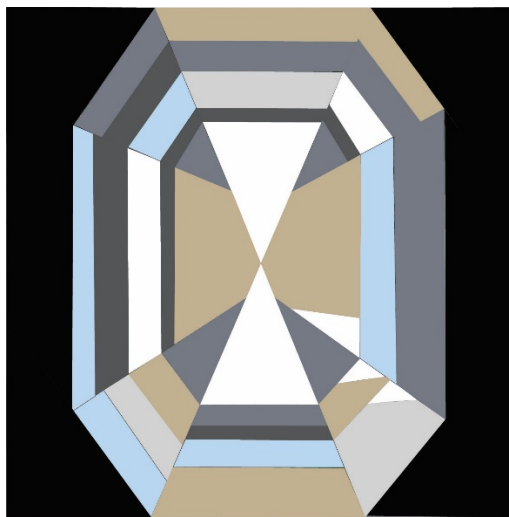
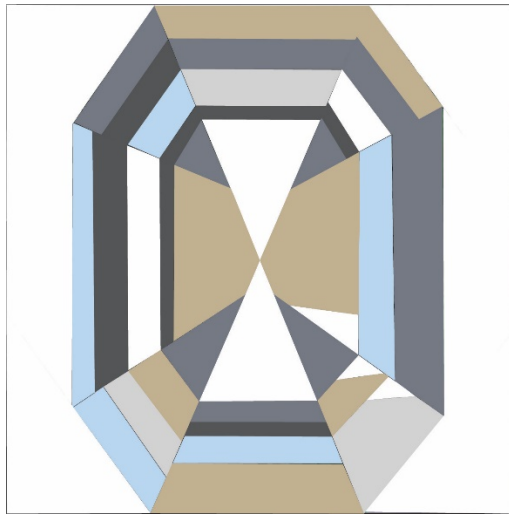
K – 1019 Black
MB – 96 Super Black
PP – 004 Ebony



K – 1387 White
MB – 200S Off White
PP – 000 White

COLORWAY SUGGESTION: "MAXIMILIAN'S FOLLY"

DIAMOND



KEY:

K = Kona Cotton Solids

MB = Moda Bella Solids

PP = Painter's Palette by
Paintbrush Studio Fabrics

A



K – 856 Quicksilver
MB – 185S Zen Grey
PP – 016 Pale Silver

B



K – 1387 White
MB – 200S Off White
PP – 000 White

C



K – 847 Spa Blue
MB – 32 Baby Blue
PP – 103 Cracked Ice

D



K – 413 Parchment
MB – 201 Sand
PP – 144 Sand Dollar

E



K – 1223 Med. Grey
MB – 184 Steel
PP – 036 Colonial Blue

F



K – 91 Steel
MB – 202 Graphite
PP – 014 Grey

G



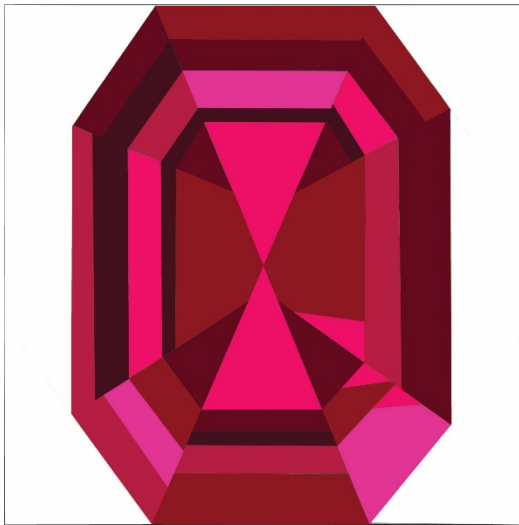
K – 1019 Black
MB – 96 Super Black
PP – 004 Ebony



K – 1387 White
MB – 200S Off White
PP – 000 White

COLORWAY SUGGESTION: "MAXIMILIAN'S FOLLY"

RUBY



KEY:

K = Kona Cotton Solids

MB = Moda Bella Solids

PP = Painter's Palette by
Paintbrush Studio Fabrics

A



K – 845 Sassy Pink

MB – 27 30's Pink

PP – 147 Hot Pink

B



K – 1049 Brite Pink

MB – 411 Chrysanthemum

PP – 119 Blush

C



K – 451 Valentine

MB – 184 Azalea

PP – 068 Rosebud

D



K – 490 Honeysuckle

MB – 223 Shocking Pink

PP – 079 Raspberry

E



K – 481 Sangria

MB – 386 Pomegranate

PP – 073 Sangria

F



K – 1039 Bordeaux

MB – 113 Barn Door

PP – 051 Claret

G



K – 1019 Black

MB – 96 Super Black

PP – 004 Ebony



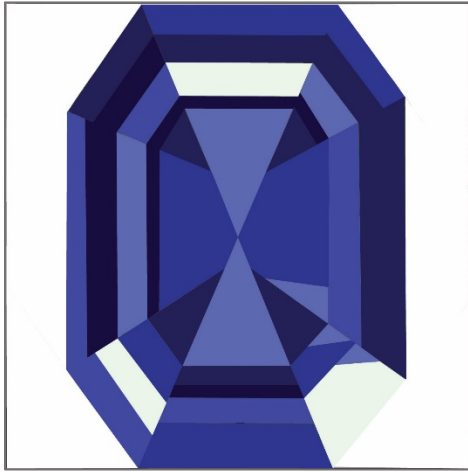
K – 1387 White

MB – 200S Off White

PP – 000 White

COLORWAY SUGGESTION: "MAXIMILIAN'S FOLLY"

SAPPHIRE



A



K – 847 Spa Blue

MB – 63 Lt Blue

PP – 020 Sky

B



K – 196 Blue Jay

MB – 25 30s Blue

PP – 032 Waterfall

C

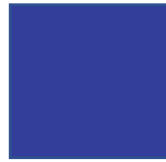


K – 357 Lapis

MB – 167 Amelia Blue

PP – 025 River

D



K – 848 Blueprint

MB – 395 Azure

PP – 131 French Blue

E



K – 1541 Deep Blue

MB – 396 Lapis

PP – 111 Patriot

F



K – 140 Nightfall

MB – 419 Midnight

PP – 001 Midnight

G



K – 1019 Black

MB – 96 Super Black

PP – 004 Ebony



K – 1387 White

MB – 200S Off White

PP – 000 White

KEY:

K = Kona Cotton Solids

MB = Moda Bella Solids

PP = Painter's Palette by
Paintbrush Studio Fabrics